



# Gentaur

**Gentaur Molecular Products BVBA**

**Address:** Voortstraat 49, 1910 Kampenhout, Belgium

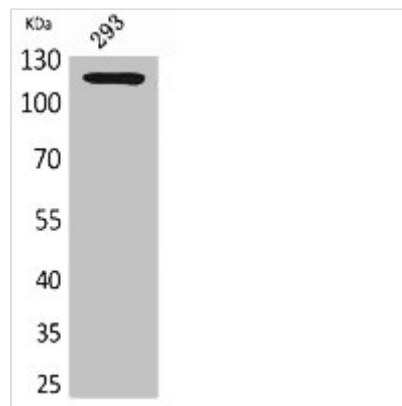
**T:** 0032 16 58 90 45 | **E:** info@gentaur.com

**Websites:** www.gentaur.com | www.maxanim.com

## ATP2A2 Antibody

<b>Product Code</b>	0399-CSB-PA005808
<b>Storage</b>	Upon receipt, store at -20°C or -80°C. Avoid repeated freeze.
<b>Uniprot No.</b>	P16615
<b>Immunogen</b>	Synthesized peptide derived from the C-terminal region of Human SERCA2.
<b>Raised In</b>	Rabbit
<b>Species Reactivity</b>	Human, Mouse, Rat
<b>Tested Applications</b>	WB, ELISA; WB:1:500-1:2000, ELISA:1:20000
<b>Form</b>	Liquid
<b>Conjugate</b>	Non-conjugated
<b>Storage Buffer</b>	Liquid in PBS containing 50% glycerol, 0.5% BSA and 0.02% sodium azide.
<b>Purification Method</b>	The antibody was affinity-purified from rabbit antiserum by affinity-chromatography using epitope-specific immunogen.
<b>Isotype</b>	IgG
<b>Alias</b>	ATP2A2; ATP2B; Sarcoplasmic/endoplasmic reticulum calcium ATPase 2; SERCA2; SR Ca(2+)-ATPase 2; Calcium pump 2; Calcium-transporting ATPase sarcoplasmic reticulum type, slow twitch skeletal muscle isoform; Endoplasmic reticulum class 1/2 Ca(2+) ATPase
<b>Immunogen Species</b>	Homo sapiens (Human)
<b>Target Names</b>	ATP2A2

### Image



Western Blot analysis of 293 cells using SERCA2 Polyclonal Antibody.



# Gentaur

**Gentaur Ltd.**

Unicorn House, 2nd floor, Station Close,

Potters Bar, Hertfordshire, EN6 1TL, United Kingdom

E: uk@gentaur.com | T: 020 33 93 85 31 | W: www.gentaur.com